

| | | | |
|-----|-----|--|--------------|
| 正式图 | 参考图 | CUSTOMER DRAWING | |
| | | The requirements of environmental protection | |
| | | ROHS2 | Halogen free |

| Mark | ECN NO. | DESCRIPTION | DESIGN | Date: |
|------|--------------|--------------------|------------|------------|
| — | — | INITIAL RELEASE | Carlyle Xu | 2014.10.08 |
| △ | ECN141111001 | ADD THE COLOR ITEM | Carlyle Xu | 2014.11.11 |

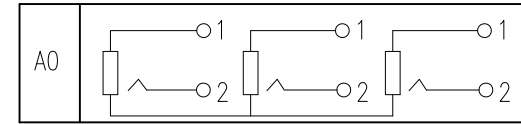
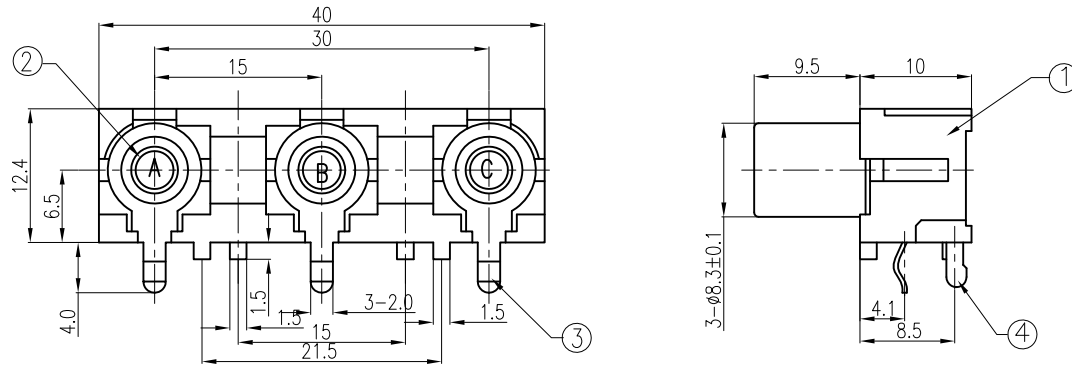


TABLE A : SCHEMATIC

| NO. | CODE | MATERIAL | COLOR | REMARK |
|-----|------|--------------------|-------|---------------|
| 2 | B6 | PBT 30%G/F UL94V-0 | BLACK | RoHS2&H.F Fit |
| 1 | B0 | PBT 30%G/F UL94V-0 | BLACK | RoHS2 Fit |

TABLE B : PLASTICAL MATERIAL

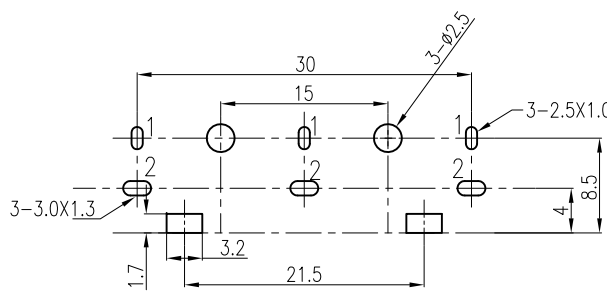
| NO. | CODE | PLATING | TERMINAL | SHEEL | REMARK |
|--------|------|---------|----------|--------|--------|
| 01 | BLK | BLK | BLK | | |
| 02 | RED | RED | RED | | |
| 03 | WHT | WHT | WHT | | |
| 04 | YEL | YEL | YEL | | |
| 05 | GRN | GRN | GRN | | |
| 06 | RED | WHT | ORN | | |
| 07 | YEL | WHT | RED | | |
| 08 | YEL | RED | WHT | | |
| △09 | RED | WHT | YEL | | |
| CHOOSE | A | B | C | CHOOSE | A B C |

TABLE C : Color Code of Washer

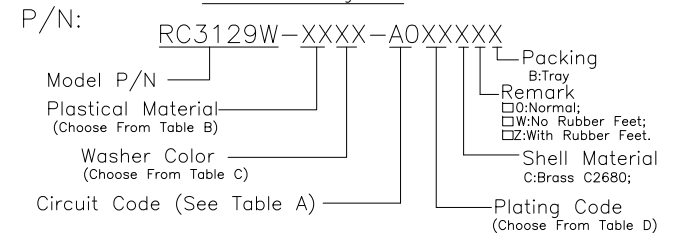
| NO. | PLATING CODE | TERMINAL | SHEEL | REMARK |
|-----|--------------|-------------------------------|---------------------|--------------|
| 5 | AD | Cu:40u"+Ni:40u"+Tin:80u"(Min) | Cu:40u"+Tin:40u"Min | 48Hours Salt |
| 4 | AE | Cu:40u"+Ni:40u"+Au:1u"(Min) | Cu:40u"+Tin:40u"Min | 48Hours Salt |
| 3 | AG | Cu:40u"+Tin:6u"+Au:0.8u"(Min) | Cu:40u"+Tin:6u"Min | 24Hours Salt |
| 2 | AB | Cu:40u"+Tin:40u"(Min) | Cu:40u"+Tin:40u"Min | 48Hours Salt |
| 1 | A2 | Cu:40u"+Tin:6u"(Min) | Cu:40u"+Tin:6u"Min | 24Hours Salt |

TABLE D : Plating Code

- NOTES:
- Rating:DC50V 0.2A;
 - Contact Resistance:Before the test≤30millionhm, After the test≤50millionhm;
 - Insulation Resistance at DC500v:Before the test≥100megohm; After the test≥50megohm;
 - Withstand Voltage:AC500V for 1minutes;
 - Insertion and Extraction force:3~30N;
 - Life test:500 Cycles.
 - Operating temperature range:-25℃~+70℃ 85%RH MAX;
 - Storage Temperature Range:-40℃~+70℃ 85%RH MAX.



T:1.6 Dimensions of PC board holes
Tolerance : ±0.05(TOP view)



| NO. | DESCRIPTION | QTY | PARTS MATERIAL | PLATING OR COLOR | REMARK |
|-----|---------------|-----|-----------------|--------------------|--------|
| 4 | TERMINAL | 3 | Brass,T=0.5 | MB:Cu Cu/Sn PLATED | ---- |
| 3 | OUTER CONTACT | 3 | Brass,T=0.4 | MB:Cu Cu/Sn PLATED | ---- |
| 2 | WASHER | 1 | PBT | CHOOSE FROM P/N | ---- |
| 1 | HOUSING | 1 | CHOOSE FROM P/N | CHOOSE FROM P/N | ---- |

| | | | | |
|-------------|--------------------------------|------------------|---------------------|----------------------|
| Tolerance | MODEL NAME:RCA PIN JACK | | DRAWING: Carlyle Xu | |
| X.X ±0.30 | MODEL No:RC3129W-BOXX-AOXXXXXB | | CHECKED: David Zhou | |
| X.XX ±0.20 | SCALE:1:1 | REVISION | SHEET | APPROVED: Jacky Lee |
| X.XXX ±0.10 | | A1 | 1/1 | DATE: 2014.10.08 |
| Angle ±3.0° | UNIT:mm | FILE: F/LINGYANG | | DWG NO. RC3129W-A001 |



菱揚精密有限公司
Ling Yang Precision Co.,Ltd