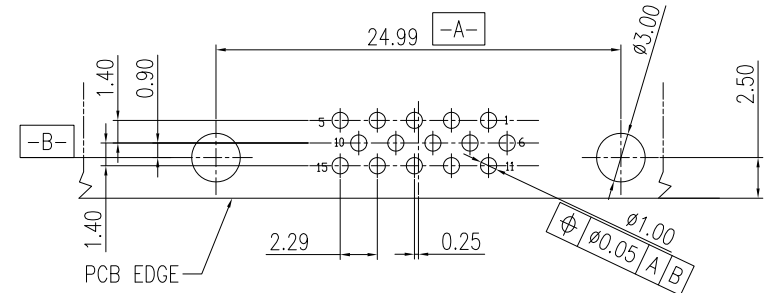
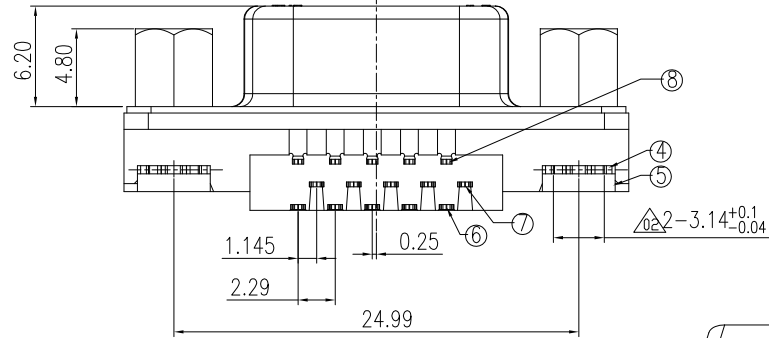
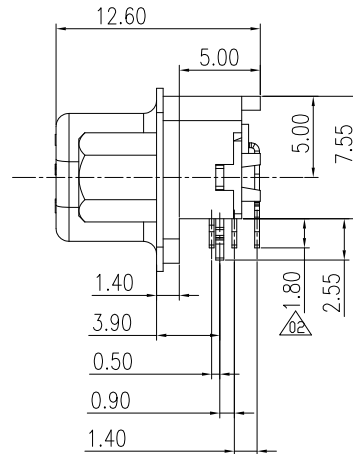
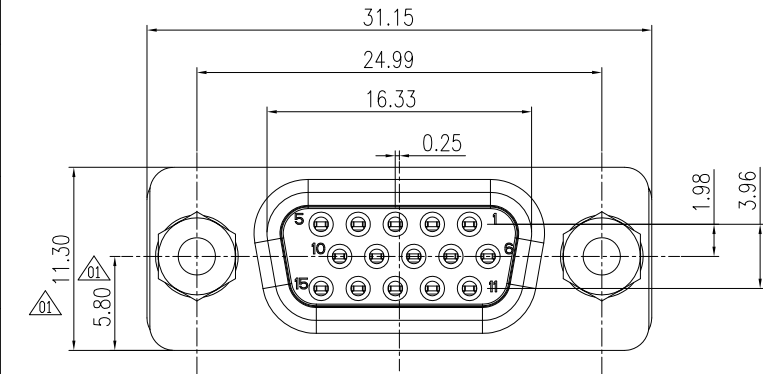


正式图 参考图 CUSTOMER DRAWING
The requirements of environmental protection
ROHS2 Halogen free

Mark	ECN NO.	DESCRIPTION	DESIGN	Date:
△1	EN20140226-001	變更鐵殼寬度尺寸	Gavin	2014-02-26
△2	EN20140321-001	客戶變更PCB厚度及改焊接端子長度	Gavin	2014-03-21



RECOMMENDED P.C.B LAYOUT (P.C.B THICKNESS 1.20±0.05mm) △2

COMPONENT SIDE VIEW(TOP VIEW)
UNSPECIFIED DIMENTION TOLERANCE IS ±0.05mm

3	CO	LCP UL94V-0	Choose P/N	RoHS2&H.F Fit
2	L3	PA10T 30%G/F UL94V-0	Choose P/N	RoHS2&H.F Fit
1	LO	HPPA TH830 UL94V-0	Choose P/N	RoHS2&H.F Fit
NO.	CODE	MATERIAL	COLOR	REMARK

TABLE A : Plastical Material

P/N:

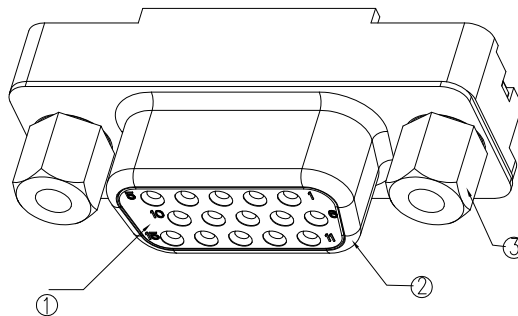
VDS130W-XXXX-XXXXXXX

Model P/N _____ Packing
 B:Tray; R:Tape reel;
 Plastical Material _____
 (Choose From Table A)
 Color _____
 01:Black
 42:Blue661C
 PIN Number _____
 Product salt mist _____
 A:Normal(8hours);
 B:24Hours;

Screw:
 W:Without screw
 S1:Attachment screw(4.8mm)
 S2:Lock screw(4.8mm)
 F1:Attachment screw(5.8mm)
 F2:Lock screw(5.8mm)

Plating Code
 0:Bright Tin;
 W:Matte Tin;
 A:CONTACT AREA:GOLD FALSH.SOLDER AREA:MATTE TIN80U"
 B:CONTACT AREA:3U"GOLD.SOLDER AREA:MATTE TIN80U"
 C:CONTACT AREA:5U"GOLD.SOLDER AREA:MATTE TIN80U"
 D:CONTACT AREA:10U"GOLD.SOLDER AREA:MATTE TIN80U"
 E:CONTACT AREA:15U"GOLD.SOLDER AREA:MATTE TIN80U"

- NOTES:
- 1.Rating:250V AC(rms) 3.0A;
 - 2.Contact Resistance:≤30Milliohm,After Test:≤50Milliohm;
 - 3.Insulation Resistance:≥5000Megohm(DC500V);
 - 4.Withstand Voltage:AC1000V for 1Minute;
 - 5.Insertion force:44.5N Max;
 - 6.Extraction force:3.34~31.15N;
 - 7.Life test:500Cycles.
 - 8.Operating Temperature:-55°C~+125°C 85%RH Max;
 - 9.Storage Temperature:-55°C~+125°C 85%RH Max.



⑧	Terminal3	1	Copper alloy	Choose from P/N plating code	Ni50u"Min Under plated over all
⑦	Terminal2	1	Copper alloy	Choose from P/N plating code	Ni50u"Min Under plated over all
⑥	Terminal1I	1	Copper alloy	Choose from P/N plating code	Ni50u"Min Under plated over all
⑤	Rivets	2	Copper alloy	Nickel 50u"plated	_____
④	Bord lock terminals	2	Copper t=0.5mm	Bright Tin plating	_____
③	Screw14-40#UNC	2	Steel	Nickel50u"Min plated	_____
②	Shell	1	SPCC-SD t=0.4mm	Cu: 50u"+Nickel80u"Min	_____
①	Housing	1	Choose from TABLE A	Color:Choose from P/N Color	_____
NO.	DESCRIPTION	QTY	PARTS MATERIAL	PLATING OR COLOR	REMARK

Tolerance	MODEL NAME:D-SUB CONNECTOR
X.X ±0.30	MODEL No:VDS130W-XXXX-15XXXXX
X.XX ±0.20	REVISION A2
X.XXX ±0.10	SHEET 1/1
Angle ±3.0°	SCALE:1:1
UNIT:mm	菱揚精密有限公司 Ling Yang Precision Co.,Ltd

DRAWING: X140 ZHONGBO
CHECKED:
APPROVED:
DATE: 2014-01-03
FILE: XZB/LINGYANG
DWG NO.VDS130W-A001