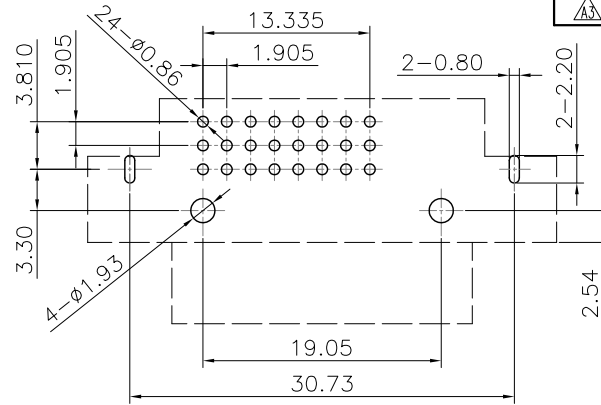
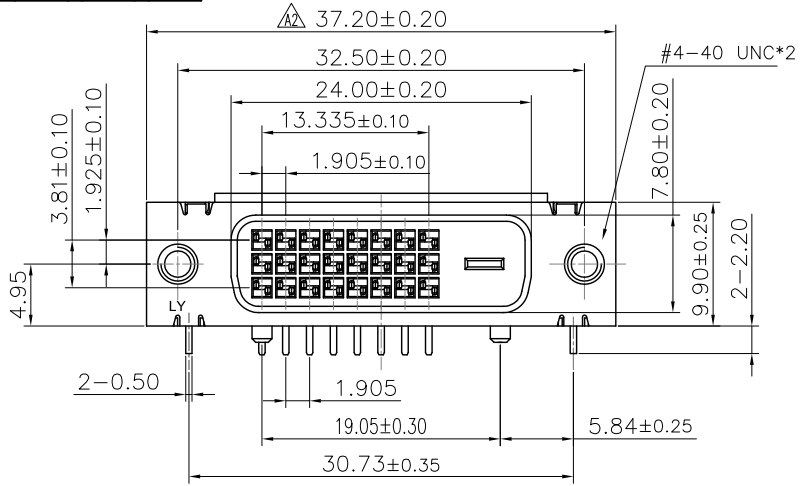


正式图 参考图 CUSTOMER DRAWING
 ROHS2 Halogen free

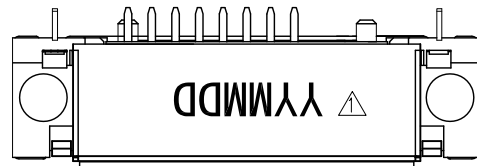
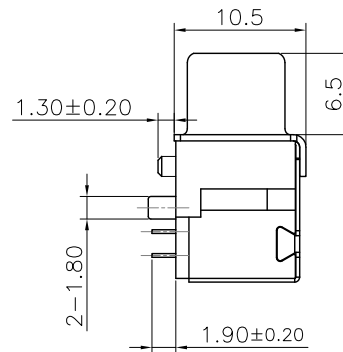
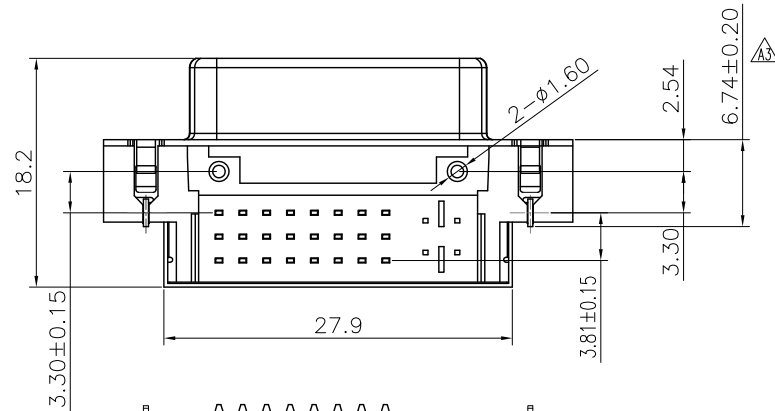
| Mark | ECN NO. | DESCRIPTION | DESIGN | Date: |
|------|----------------|---------------------------|------------|------------|
| | | INITIAL RELEASE | Carlyle Xu | 2015.04.21 |
| △ | ECN2015110001 | UNMARK | Carlyle Xu | 2015.11.10 |
| △2 | ECN20170310001 | Modify the part structure | David Zhou | 2017.03.17 |
| △3 | EN20170406002 | Add dimensioning | David Zhou | 2017.04.06 |



P.C.B LAYOUT

NOTES:

- Rating: 40V AC(rms) 1.5Ampere;
- Contact Resistance: Before the test ≤ 20 Milliohm; After the test ≤ 50 Milliohm;
- Insulation Resistance: ≥ 1000 Megohm (at DC500V ± 50V);
- Withstand Voltage: DC500V, No flashover, No sparkover, No excess leakage, No breakover;
- Insertion and Extraction force: 45N Max;
- Extraction force: 10~40N;
- Life test: 100 Cycles.
- Operating Temperature: -25°C ~ +85°C 85%RH Max;
- Storage Temperature: -40°C ~ +85°C 85%RH Max.



P/N:

DVI004W-XXXX-XXA3XXB

MODEL NO: _____

HOUSING MATERIAL: _____

LO: LCP+30%G/F HF.

HOUSING COLOR: _____

O1: BLACK;

SALT: _____

□ 2: 24 HOURS;

□ 4: 48 HOURS;

□ 7: 72 HOURS.

PACKING: B: TRAY

SCREW: WL: WITHOUT SCREW; S2: WITH SCREW 4.8; S4: WITH SCREW 5.8.

TERMINAL PLATING: A3: G/F

TERMINAL LENGTH: 3: 2.3mm;

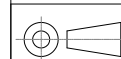
| NO | DESCRIPTION | QTY | MATERIAL | PLATING/COLOR | REMARK |
|----|-------------|-----|----------------|--------------------------------|--------|
| 7 | SCREW | 1 | SPCC | Cu:50u" + Ni:80u" (Min) | |
| 6 | SHIELD | 1 | SPCC T=0.3mm | Cu:50u" + Ni:80u" (Min) | |
| 5 | BOARD LOCK | 2 | BRASS T=0.40mm | Cu:50 + Ni:50u" + Tin100u" | |
| 4 | SHELL | 1 | SPCC T=0.5mm | Cu:50u" + Ni:80u" (Min) | |
| 3 | CONTACTS | 24 | BRASS T=0.25mm | Au1u" Min + Ni:50u" + Tin100u" | |
| 2 | COVER | 1 | LCP | Black | |
| 1 | HOUSING | 1 | SEE P/N | SEE P/N | |

Tolerance
 X.X ±0.30
 X.XX ±0.20
 X.XXX ±0.10
 Angle ±3.0°

UNIT: mm

Model Name: DVI24+1 90° With shielding case

Model No: DVI004W-XXXX-XXXXXXB



SCALE: 1:1

REVISION: A3

SHEET 1/1



菱揚精密有限公司
 Ling Yang Precision Co., Ltd

Drawing: Carlyle Xu

Checked: David Zhou

Approved: Jacky Lee

Date: 2015.04.21

FILE: F/LINGYANG

DWG NO. DVI004W-A001