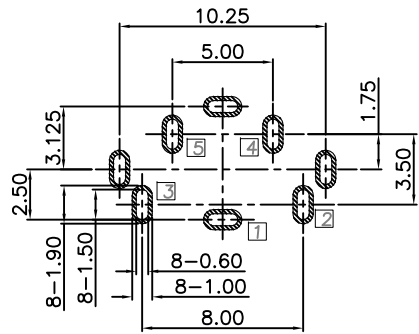
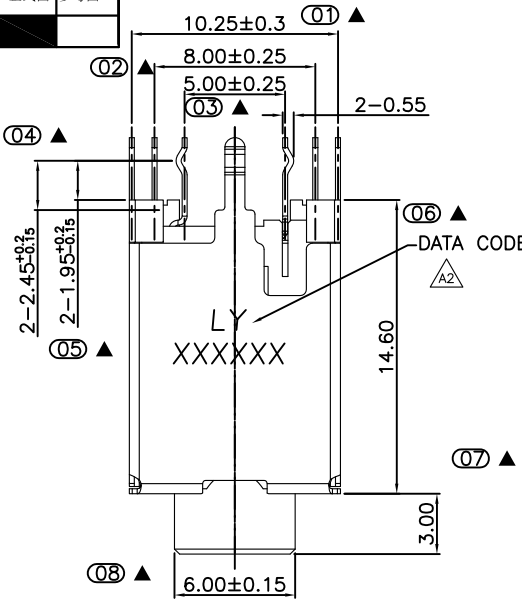
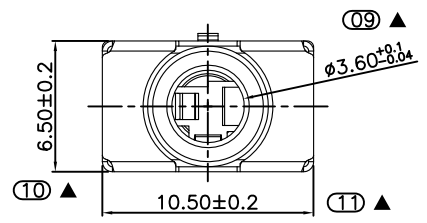
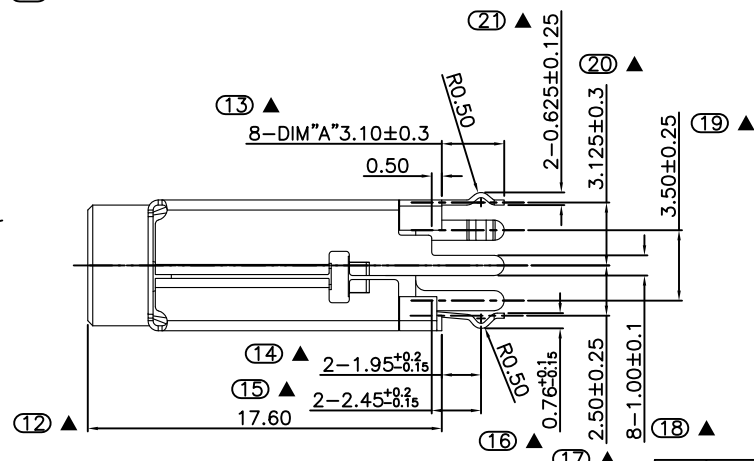
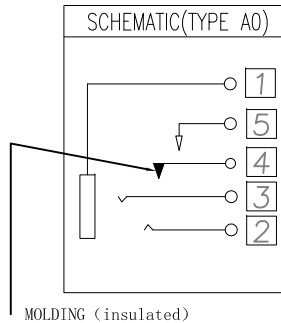


正式图 参考图



RECOMMENDED P.C.B LAYOUT
TOP VIEW (TOLRANCE:±0.05)



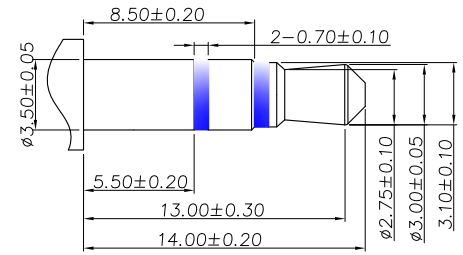
Mark	ECN NO.	DESCRIPTION	DESIGN	Date:
		INITIAL RELEASE	Peter Wang	2018-01-22
△1	EN20180131003	Modify the part structure	Peter Wang	2018-01-31
△2	EN20180619002	Add date code	Peter Wang	2018-06-19

SPECIFICATION:

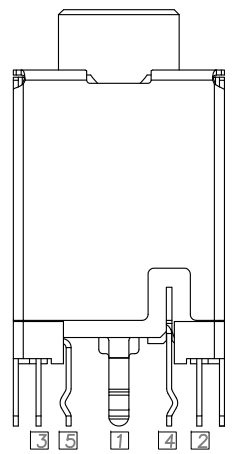
- Electrical characteristics
 - Voltage rating: DC 30V.
 - Current rating: 0.5A
 - Contact resistance: 30mΩ Max.(Initial)
After test: 50mΩ Max.
 - Insulation resistance: 100MΩ Min(500V DC).
 - Withstanding voltage: 500V AC.
- Mechanical characteristics
 - Life test: 5000 cycles
 - Mating force: 3-30N
Unmating force: 3-30N
- Salt Spray: Gold nickel Area 48 hours, Matte Tin Area 8 hours
- Wave Solder 270°C, 5 sec.
IR Reflow, Peak Temp 260°C, 5 sec.
- Sign "▲" is importance dimension.

NO.	CODE	MATERIAL	REMARK
2	C1	LCP UL94V-0	RoHS2&H.F Fit(IR Reflow)
1	CO	LCP UL94V-0	RoHS2 Fit(IR Reflow)

TABLE B : Plastical Material



MATE PLUG (3 POLE)



P/N: CDN335F-XXXX-A0XXXXX

Model P/N

Plastical Material (Choose From Table B)

Housing Color
 01:Black
 02:Green

Schematic Code (See Table A)

Product salt mist
 A:Normal;
 B:24Hours;
 C:48Hours;

Packing
 B:Tray;
 R:Tape reel;

PIN length (DIM A)
P1=3.10mm

Plating
 A:Gold 1u"
 5: Au 30u"

NO.	DESCRIPTION	FOOT	QTY	MATERIAL	REMARK
G	Housing		1	LCP	BLACK,UL94 V-0
F	Shell		1	SUS/C2680,T0.25	Nickel 50u"Under Plating All Over
E	Contact 5	5	1	C5191,T0.25	Gold Flash Plating At Contact Area; Matte-TIN Plating At Solder Tail Area; Nickel 50u"Under Plating All Over
D	Contact 4	4	1	C5191,T0.25+PA10T	
C	Contact 3	3	1	C5191,T0.25	
B	Contact 2	2	1	C5191,T0.25	
A	Contact 1	1	1	C5191,T0.25	
Tolerance		MODEL NAME:3.5PHONE JACK			DRAWING: Peter Wang
X.X	±0.30	MODEL No:CDN335F-XXXX-A0XXXXX			CHECKED: David zhou
X.XX	±0.20	SCALE:1:1	REVISION A2	SHEET 1/1	APPROVED: Jacky Lee
X.XXX	±0.10				DATE: 2018.01.22
Angle	±3.0°	UNIT:mm			FILE: F/LINGYANG
		菱揚精密有限公司 Ling Yang Precision Co.,Ltd			DWG NO. CDN335F-A001