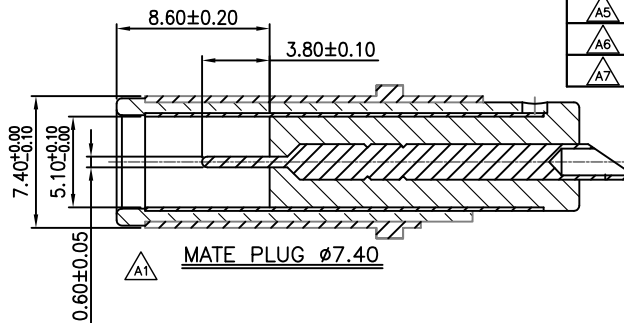
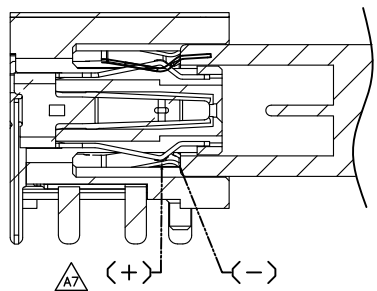
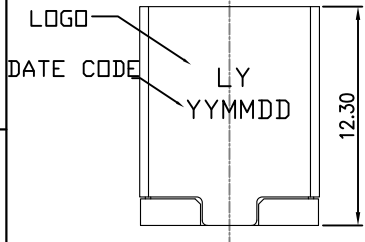


正式图 参考图

YYMMDD
YEAR MONTH DATE



Mark	ECN NO.	DESCRIPTION	DESIGN	Date:
—	—	NEW VERSION	Carlyle Xu	2016.07.07
△A5	EN20170523002	Modify the part structure	Carlyle Xu	2017.05.23
△A6	EN20170602001	Modify the part structure	David Zhou	2017.06.02
△A7	EN20171113003	Modify the part structure	David Zhou	2017.11.20

SPECIFICATION:

1.ELECTRICAL CHARACTERISTICS:

1.1 CONNECTOR RATED CURRENT: 10.0A @30°C MAX. T OVER AMBIENT
RATED VOLTAGE: 30V AC OR 42V DC

1.2 INSULATION RESISTANCE:100 MΩMS MIN AT 100V DC AFTER 1 MIN

1.3 DIELECTRIC WITHSTANDING VOLTAGE: 150V AC FOR 1 MINUTE;

1.4 CONTACT RESISTANCE: DC_IN+/DC_IN-10 mΩMS MAX.(Initial)
CENTER PIN:30 mΩMS MAX.(Initial)
DC_IN+/DC_IN-20 mΩMS MAX. (Final)
CENTER PIN:40 mΩMS MAX. (Final)

2.MECHANICAL CHARACTERISTICS:

△A5

2.1 MATING FORCE: 3KG/F MAX

2.2 UNMATING FORCE: 1~2 KG/F

2.3 DURABILITY(MATING/UNMATING CYCLES): 5000 (unmating force 0.7~2kgf)

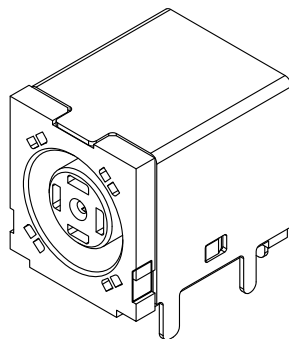
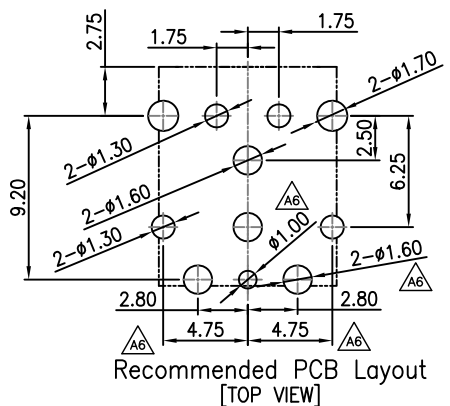
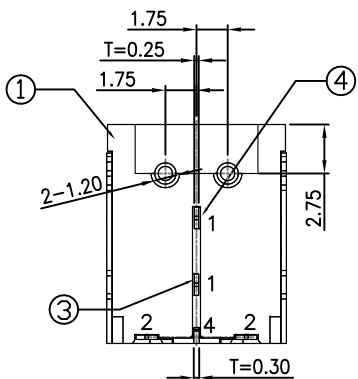
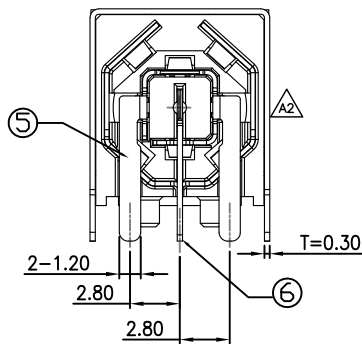
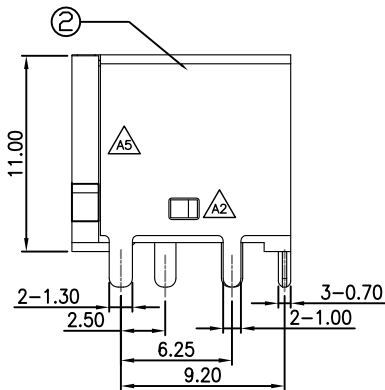
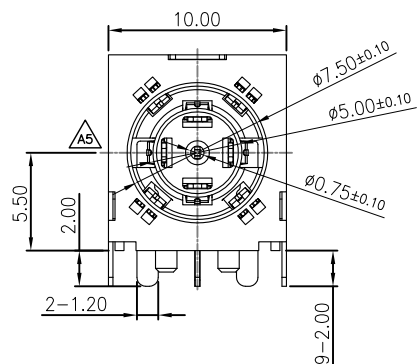
3.OPERATING TEMPERATURE RANGE:-40°C~85°C

4.HUMIDITY: 85% RH MAX;

5.P.C.B. LAYOUT DRAWING DIMENSION DEFAULT TOLERANCE:±0.05(0.002)

6.RECOMMENDED P.C.B.THICKNESS:1.60±0.05(0.063±0.002)

7.RECOMMENDED PROSS:IR REFLOW PEAK TEMPERATURE 230±25°C,20
OR WAVE SOLDER PEAK TEMPERATURE 265°C,3~5s



NO.	CODE	CENTER PIN DIA. #A	SCHEMATIC
4			
3			
2			
1	0075	φ0.60 ⁺⁰ _{-0.05}	

TABLE A: Model of Center Pin

NO.	CODE	MATERIAL	REMARK
1	L0	PA9T UL94V-0	RoHS2+HF (IR Reflow)

TABLE B : Plastical Material

P/N: DC4297W-XXXX-XXXXOXX △
Model P/N _____ Packing R:Tape reel(24);
 M:Tape reel(44);
Plastical Material _____ Remark
(Choose From Table B) 00:Gold plating G/F(LY+DC)
01:Gold plating 50u"(LY+DC)
02:Gold plating G/F(HDSY+DC)
03:Gold plating 50u"(HDSY+DC)
Housing Color _____ Center Pin Dim Code
 01:Black (Choose From Table A)

NO.	DESCRIPTION	QTY	PARTS MATERIAL	PLATING OR COLOR	REMARK
6	DETECT Pin	1	PHOSPHOR BRONZE C5210	Au+Tin	
5	POWER Pin	1	PHOSPHOR BRONZE C5210	Au+Tin	
4	GROUND Pin2	1	PHOSPHOR BRONZE C5210	Au	△A5
3	GROUND Pin1	1	PHOSPHOR BRONZE C5210	Au	△A5
2	SHELL	1	SUS 304	Ni	△A5
1	Housing	1	Thermoplastic	SEE TABLE B	

Tolerance X.X ±0.30 X.XX ±0.20 X.XXX ±0.10 Angle ±3.0°	MODEL NAME: DC POWER JACK MODEL No:DC4297W-XXXX-XXXXOXX	DRAWING: Carlyle Xu CHECKED: David Zhou
UNIT:mm	SCALE:1:1 REVISION A7	APPROVED:Jacky Lee DATE: 2016.07.07
	菱揚精密有限公司 Ling Yang Precision Co.,Ltd	FILE: CD/LINGYANG DWG NO. DC4297W-A001