

正式图 参考图 CUSTOMER DRAWING
The requirements of environmental protection
ROHS2 Halogen free

| | | | | |
|------|---------|-----------------|------------|------------|
| Mark | ECN NO. | DESCRIPTION | DESIGN | Date: |
| — | — | INITIAL RELEASE | Carlyle Xu | 2017.06.05 |

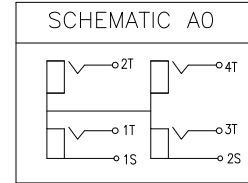


TABLE A: Circuit Code

| | | | | |
|-----|------|---------|--------------------|---------------|
| 2 | B4 | ABS | PBT 30%G/F UL94V-0 | RoHS2&H.F Fit |
| 1 | B0 | ABS | PBT 30%G/F UL94V-0 | RoHS2 Fit |
| NO. | CODE | HOUSING | WASHER | REMARK |

TABLE B : Plastical Material

| | | | | | | | | | |
|--------|-----|-----|-----|-----|--------|-----|-----|-----|-----|
| 01 | BLK | BLK | BLK | BLK | 10 | WHT | WHT | RED | RED |
| 02 | WHT | WHT | WHT | WHT | 11 | YEL | YEL | WHT | WHT |
| 03 | YEL | YEL | YEL | YEL | 12 | WHT | WHT | YEL | YEL |
| 04 | GRN | GRN | GRN | GRN | 13 | RED | RED | BLK | RED |
| 06 | RED | RED | BLK | BLK | 14 | BLU | WHT | RED | RED |
| 07 | RED | BLK | BLK | RED | 15 | BLU | BLK | RED | RED |
| 08 | RED | WHT | ORN | YEL | 16 | BLK | RED | RED | RED |
| 09 | WHT | YEL | RED | ORN | 17 | WHT | YEL | RED | BLK |
| CHOOSE | A | B | C | D | CHOOSE | A | B | C | D |

WHT:WHITE(白) BLU:BLUE(蓝) BRN:BROWN(棕)
 YEL:YELLOW(黄) ORN:ORANGE(橘) BRN:BROWN(棕)
 GRN:GREEN(绿) GRY:GRAY(灰)
 BLK:BLACK(黑) RED:RED(红)

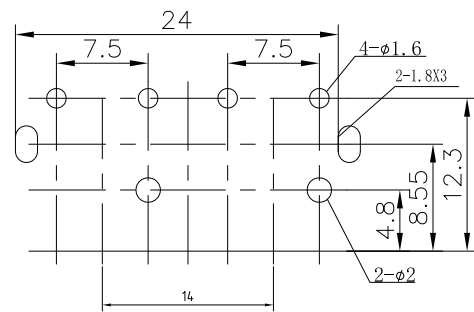
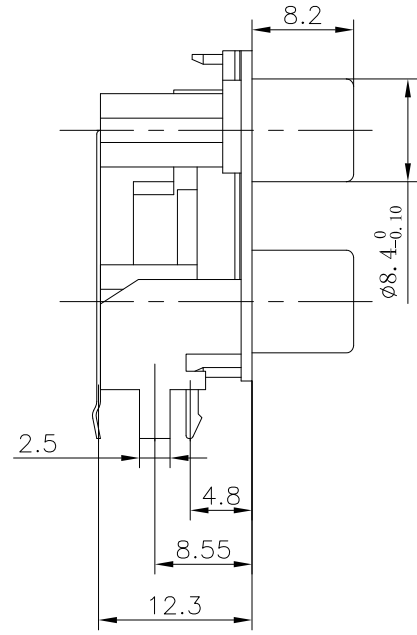
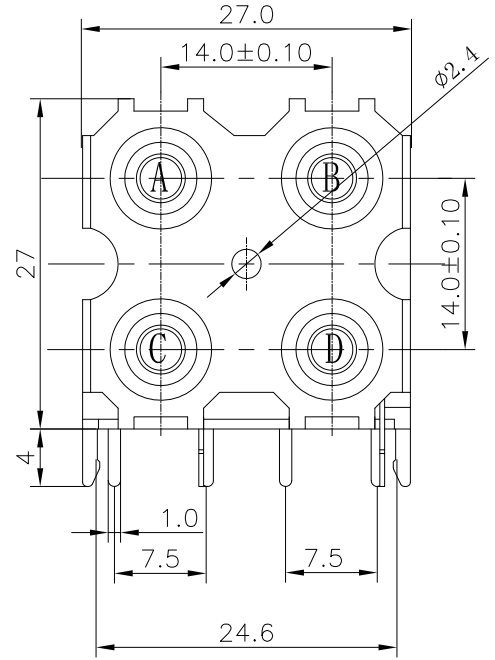
TABLE C : Color Code of Washer

| | | | | |
|-----|--------------|--------------------------------|---------------------|--------------|
| 3 | AG | Cu:40u"+Tin:80u"+Au:0.8u"(Min) | Cu:40u"+Tin:80u"Min | 48Hours Salt |
| 2 | AB | Cu:40u"+Tin:80u"(Min) | Cu:40u"+Tin:80u"Min | 48Hours Salt |
| 1 | A2 | Cu:6u"+Tin:6u"(Min) | Cu:6u"+Tin:6u"Min | 24Hours Salt |
| NO. | PLATING CODE | SHELL | TERMINAL | REMARK |

TABLE D : Plating Code

P/N: RC4125W-XXXX-XXXXXXXX

Model P/N _____ Packing
 Plastical Material _____ B:Tray
 (Choose From Table B) _____ Remark
 Washer Color _____ □:Normal;
 (Choose From Table C) _____ Shell Material
 Circuit Code _____ C:Brass C2680;
 (See Table A) _____ Plating Code
 (Choose From Table D)



- NOTES:
- Rating:DC12V 1.0A;
 - Contact Resistance:Before the test≤30milliohm, After the test≤50milliohm;
 - Insulation Resistance at DC500v:Before the test≥100megohm; After the test≥50megohm;
 - Withstand Voltage:AC500V for 1minutes;
 - Insertion and Extraction force:3~30N;
 - Life test:500 Cycles.
 - Operating temperature range:-25℃~+70℃ 85%RH MAX;
 - Storage Temperature Range:-40℃~+70℃ 85%RH MAX.

| | | | | | |
|-----|---------------|-----|-----------------|------------------|--------|
| 5 | TERMINAL-2 | 2 | Brass | Sn PLATED | - |
| 4 | TERMINAL-1 | 2 | Brass | Sn PLATED | - |
| 3 | OUTER CONTACT | 1 | Brass | Sn PLATED | - |
| 2 | WASHER | 4 | Choose from P/N | Choose from P/N | - |
| 1 | HOUSING | 1 | ABS | BLACK | - |
| NO. | DESCRIPTION | QTY | PARTS MATERIAL | PLATING OR COLOR | REMARK |

| | | |
|-------------|-----------------------------------------|---------------------|
| Tolerance | MODEL NAME:RCA PIN JACK | DRAWING: Carlyle Xu |
| X.X ±0.30 | MODEL No:RC4125W-XXXX-A0XXXXB | CHECKED: David Zhou |
| X.XX ±0.20 | REVISION A0 | APPROVED: Jacky Lee |
| X.XXX ±0.10 | SHEET 1/1 | DATE: 2017.06.05 |
| Angle ±3.0° | SCALE:1:1 | FILE: F/LINGYANG |
| UNIT:mm | 菱揚精密有限公司 Ling Yang Precision Co.,Ltd | DWG NO.RC4125W-A001 |