

P.C.B LAYOUT TOP VIEW

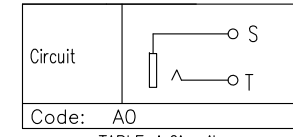
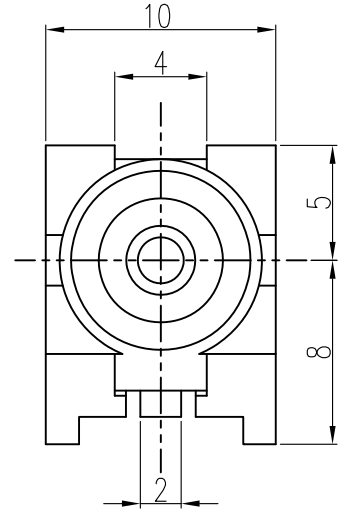


TABLE A: Circuit

NO.	CODE	MATERIAL	REMARK
2	B4	PBT 30% GF UL94V-0	RoHS2&H.F Fit
1	B0	PBT 30% GF UL94V-0	RoHS2 Fit

TABLE B : Plactical Material

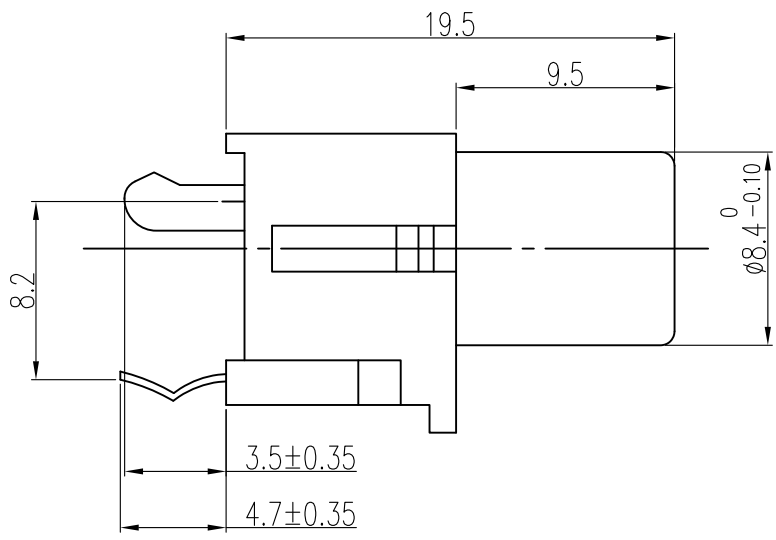
NO.	CODE	MATERIAL	REMARK
01	BLK		
02	RED		
03	WHT		
04	YEL		
05	GRN		
06	ORN		
07	BLU		
08	GRY		
A			

WHT:WHITE(白)	BLU:BLUE(蓝)	BRN:BROWN(棕)	GRN:GREEN(绿)
YEL:YELLOW(黄)	ORN:ORANGE(橙)	BRN:BROWN(棕)	GRN:GREEN(绿)
GRN:GREEN(绿)	GRY:GRAY(灰)	R711U:RED(红)	
BLK:BLACK(黑)	RED:RED(红)	PUR: PURPLE(紫)	

TABLE C : Color Code of Washer

NO.	PLATING CODE	SHELL	TERMINAL	SHIELD	REMARK
1	A2	Cu:6u"+Tin:6u"(Min)	Cu:6u"+Tin:6u"Min		24Hours Salt

TABLE D : Plating Code



- NOTES:
- Rating:DC12V 1.0A;
  - Contact Resistance:Before the test≤30milliohm, After the test≤50milliohm;
  - Insulation Resistance at DC500v: Before the test≥100megohm; After the test≥50megohm;
  - Withstand Voltage:AC500V for 1minutes;
  - Insertion and Extraction force:3~30N;
  - Life test:500 Cycles.
  - Operating temperature range:-25℃~+70℃ 85%RH MAX;
  - Storage Temperature Range:-40℃~+70℃ 85%RH MAX.

P/N: RC1015W-XXXX-XXXXXXX

Model P/N: \_\_\_\_\_

Plactical Material (Choose From Table B) \_\_\_\_\_

Color (Choose From Table C) \_\_\_\_\_

Circuit Code (See Table A) \_\_\_\_\_

Packing  B:PE Bag

Remark  0:Normal

Shell Material H:Spcd C:Brass C2680

Plating Code (Choose From Table D) \_\_\_\_\_

NO.	DESCRIPTION	QTY	PARTS MATERIAL	PLATING OR COLOR	REMARK
4	Terminal-T	1	Brass	Plating:Choose from table D	-
3	Outer Contact-S	1	Brass	Plating:Choose from table D	-
2	Washer	1	PBT	Color:Choose from Table C	-
1	Housing	1	Choose from Table B	Color:Choose from Table P/N	-

Tolerance X.X ±0.30 X.XX ±0.20 X.XXX ±0.10 Angle ±2.0	MODEL NAME:RCA PIN JACK		DRAWING: Carlyle xu	
	MODEL No:RC1015W-XXXX-A0XXX0B		CHECKED: David Zhou	
SCALE:1:1 REVISION A0 SHEET 1/1	APPROVED: Jacky Lee		DATE: 2016-12-12	
	FILE: F/LINGYANG		DWG NO: RC1015W-A001	
UNIT:mm	菱揚精密有限公司 Ling Yang Precision Co.,Ltd			