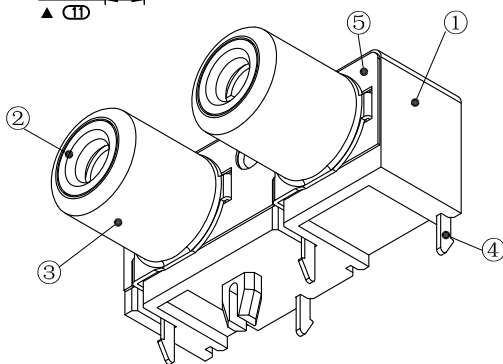
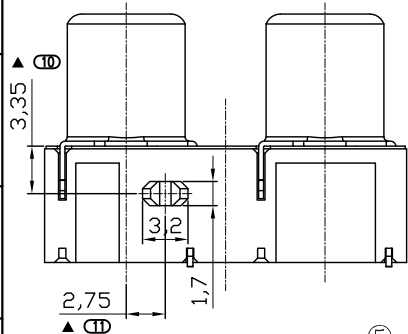
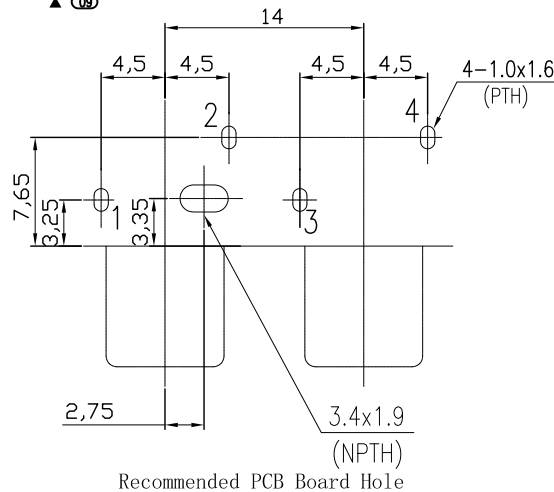
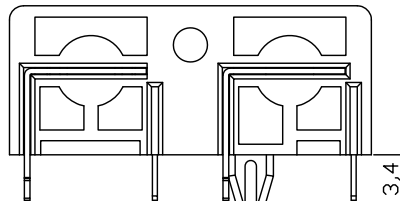
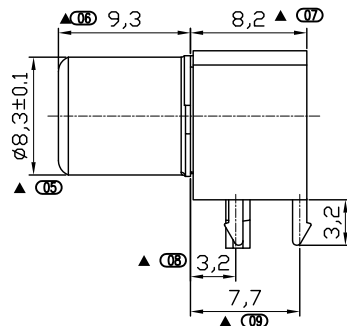
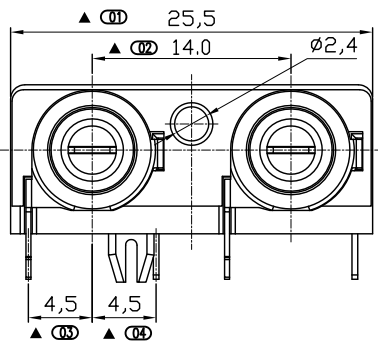


正式图 参考图

Mark	ECN NO.	DESCRIPTION	DESIGN	Date:
—	—	INITIAL RELEASE	Peter Wang	2018-01-16



NOTES:

- Rating:DC12V 1.0A;
- Contact Resistance:Before the test≤30milliohm, After the test≤50milliohm;
- Insulation Resistance at DC500v:Before the test≥100megohm; After the test≥50megohm;
- Withstand Voltage:AC500V for 1minutes;
- Insertion and Extraction force:3~30N;
- Life test:500 Cycles.
- Operating temperature range:-25°C~+70°C 85%RH MAX;
- Storage Temperature Range:-40°C~+70°C 85%RH MAX.
- Recommend Process:
Wave solder 260°C, 3~5 Seconds.
IR Reflow,Peak Temp (230~245) °C,20~40Seconds.
- Sign "▲" is importance dimension.

2	B4	PBT 30%G/F UL94V-0	PBT 30%G/F UL94V-0	RoHS2&H.F Fit(Wave solder)
1	B0	PBT 30%G/F UL94V-0	PBT 30%G/F UL94V-0	RoHS2 Fit(Wave solder)
NO.	CODE	HOUSING MATERIAL	WASHER MATERIAL	REMARK

TABLE B : Plastical Material

06	RED	BLK	15	RED	WHT	23	WHT	BLK
07	GRN	BLU	16	GRN	RED			
09	WHT	193C	17	GRN	WHT			
10	RED	WHT	18	164C	BLK			
11	YEL	WHT	19	YEL	RED			
12	WHT	YEL	20	YEL	RED			
13	WHT	RED	21	RED	YEL			
14	YEL	BLK	22	BLK	RED			
CHOOSE	A	B	CHOOSE	A	B	CHOOSE	A	B

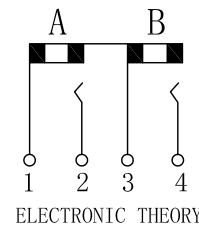
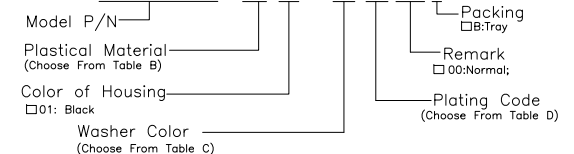
TABLE C : Color Code of Washer

1	AF	Ni PLATED	CuSn PLATED	—
NO.	PLATING CODE	COVER	TERMINAL	REMARK

TABLE D : Plating Code

P/N:

RC2024W-XXXX-XXXXXXX



⑤	CONNECT PIECE	1	SUS t=0.2mm	—	
④	TERMINAL	2	BRASS t=0.4mm	Choose from Table D	X
③	COVER	2	BRASS t=0.35mm	Choose from Table D	X
②	Washer	2	(Choose from Table B)	Choose from Table C	X
①	Housing	1	(Choose from Table B)	Choose from P/N	X
NO.	DESCRIPTION	QTY	PARTS MATERIAL	PLATING OR COLOR	REMARK

Tolerance	MODEL NAME:RCA PIN JACK	DRAWING: Peter Wang
X.X ±0.30	MODEL No:RC2024W-XXXX-XXXXXXX	CHECKED: David Zhou
X.XX ±0.20	SCALE	REVISION
X.XXX ±0.10	1:1	A0
Angle ±3.0°	SHEET	1/1
UNIT: mm	FILE: F/LINGYANG	DATE: 2018.01.16
	菱揚精密有限公司	DWG NO.RC2024W-A001
	Ling Yang Precision Co.,Ltd	