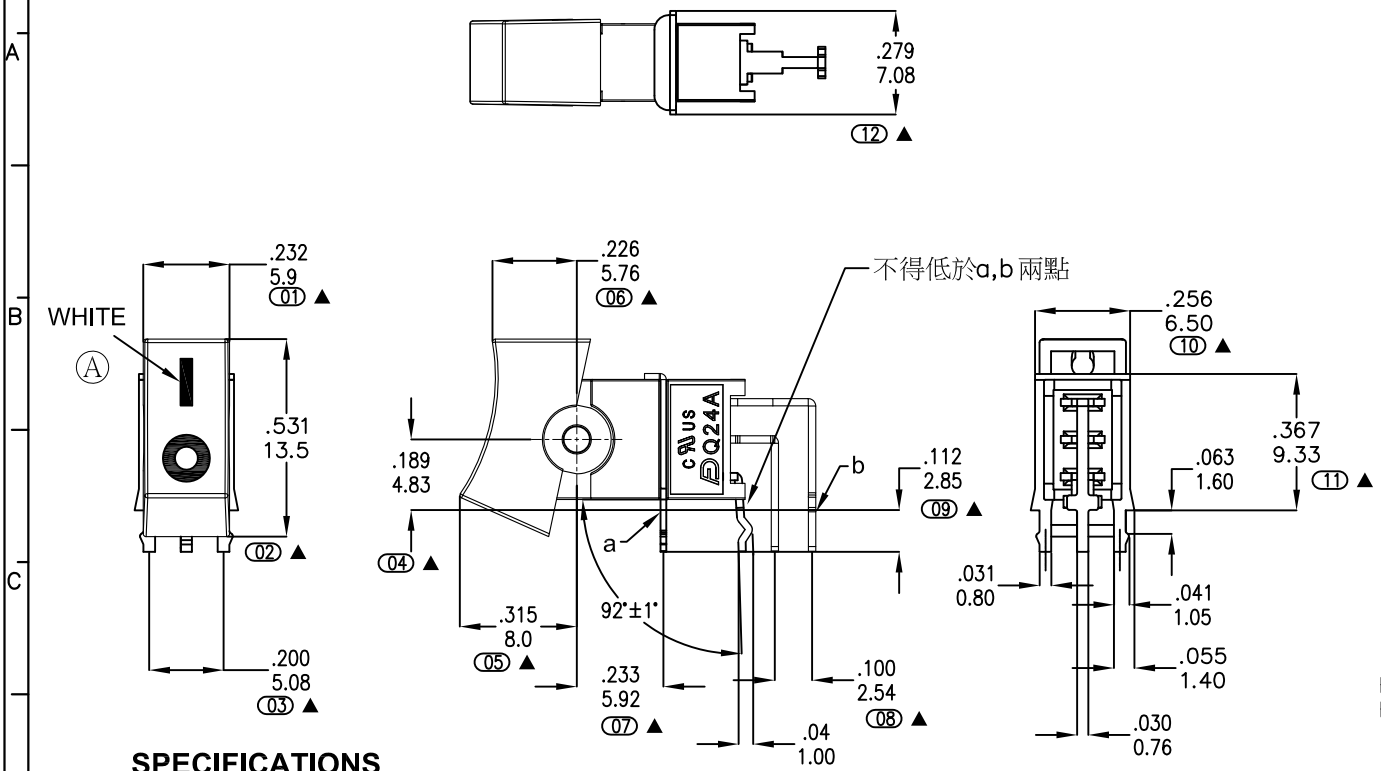


正式图 参考图

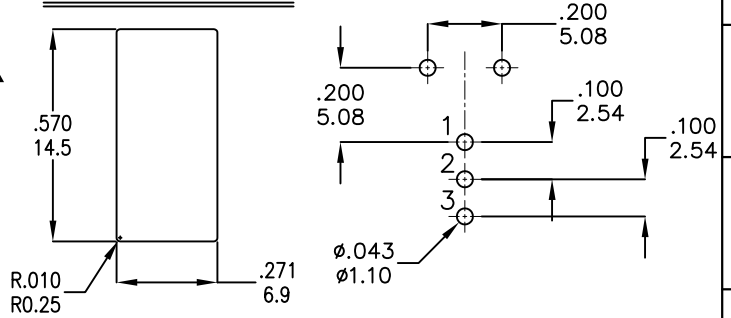
Mark	ECN NO.	DESCRIPTION	DESIGN	Date:
---	---	INITIAL RELEASE	David zhou	2017.10.15



不得低於a,b兩點

Model No.	POS.1	POS.2	POS.3
4DS1	ON	NONE	ON
Term. Comm.	2-3	N/A	2-1
SCHEMATIC		N/A	

**SWITCH FUNCTION**



**PANEL MOUNTING**

**P.C.B. MOUNTING**

**SPECIFICATIONS**

- MECHANICAL LIFE:** 30,000 make-and-break cycles.
- CONTACT RESISTANCE:** 20 mΩ max. initial @ 2-4VDC/100mA for both silver and gold plated contacts.
- INSULATION RESISTANCE:** 1,000 MΩ min.
- DIELECTRIC STRENGTH:** 1,000 Vrms min.@sea level.
- OPERATING TEMPERATURE:** -30°C to 85°C.

**MATERIALS**

- CASE & BUSHING -** Glass filled FR52 (UL94v-0).
- ACTUATOR -** Nylon, black std.
- SWITCH SUPPORT -** Brass or steel, tin plated.
- TERMINALS/CONTACT -** Copper, Silver plated.
- Halogen Free+RoHS**

**RATING :**

Q : 1Amps @250VAC / 3Amps @120 VAC  
Sign"▲"is importance dimension.

RS1014W-FOXX-A00000P

MODEL P/N  
Material of Housing F0:FR52 ROHS2(IR Reflow)  
Color of Housing and Actuate 01=BLACK  
Schematic Code  
Packing P:PE Bag  
Remark 0000: Normal

Tolerance >10 ±0.40 <10 ±0.25 Angle ±3.0°	MODEL NAME: ROCKER SWITCH			DRAWING: David zhou
	MODEL No: RS1014W-XXXX-XXXXXXX			CHECKED: David zhou
UNIT:mm		SCALE 1:1	REVISION A0	SHEET 1/2
		菱揚精密有限公司 Ling Yang Precision Co.,Ltd		FILE: F/LINGYANG
				DATE: 2017-10-15
				DWG NO.RS1014W-A001